

Appendix 1.2a Sampling Facilities on Circular Stacks

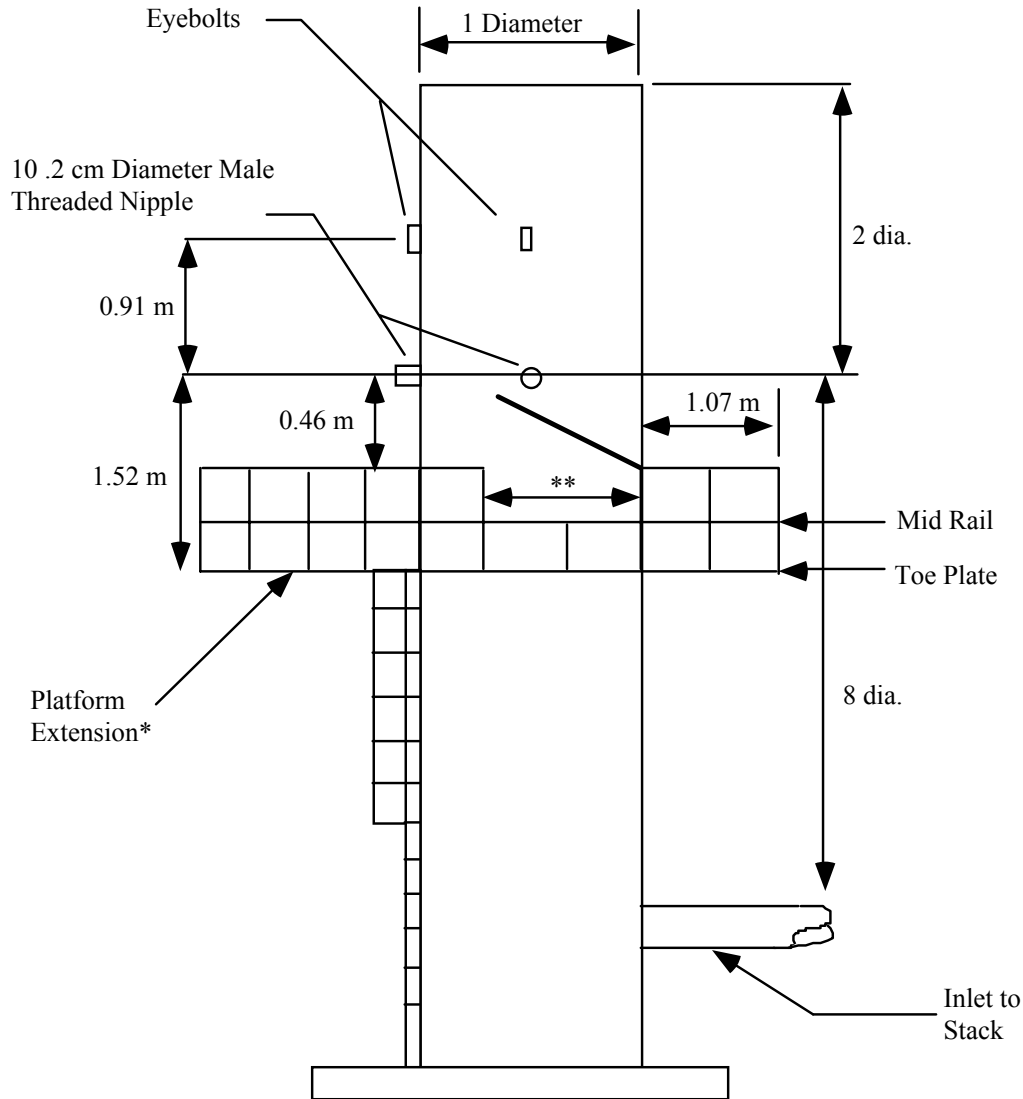


Figure 1

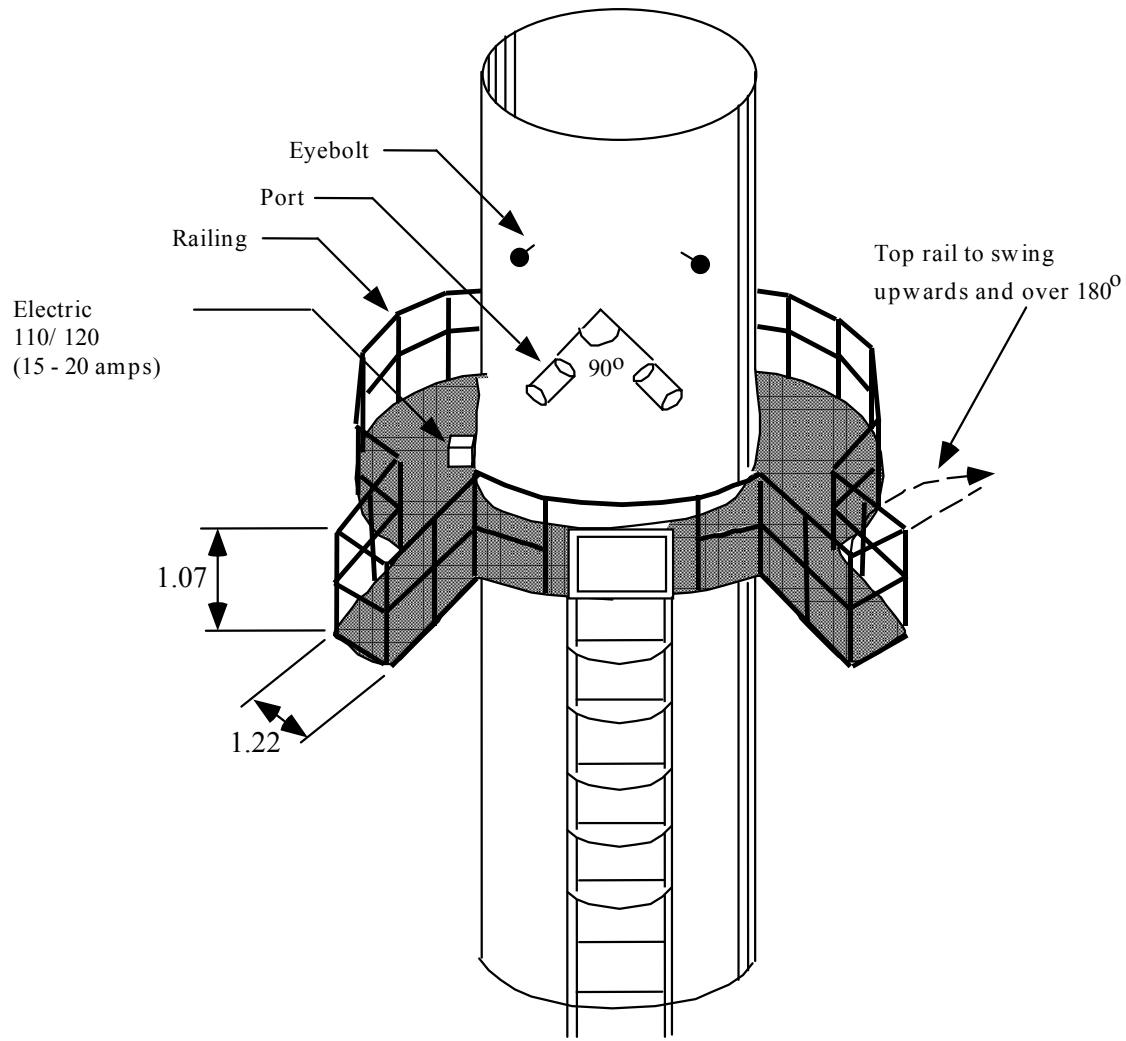
Note:

* Stacks with Inside Diameter (I.D.) less than 1.22 m do not require platform extension. See figure 1.1 for length of platform extension when I.D. is greater than 1.22 m.

** The 1.22 m top rail-guard in front of ports (with or without platform extension) shall be hinged to swing upwards and over 180 degrees when necessary.

All dimensions are in metres unless otherwise noted.

Appendix 1.2b Sampling Facilities on Circular Stacks



Schematic Diagram

Figure 1.1

All dimensions are in metres.