

# Siemens E O SU PD - Turbines

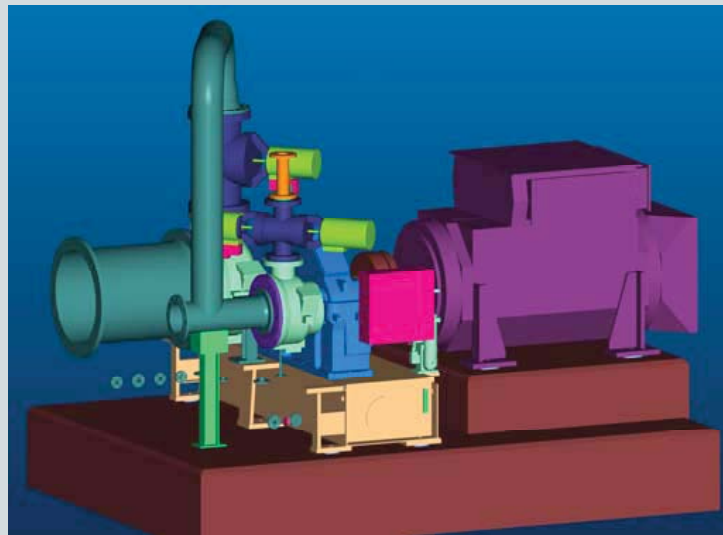
## → Products & markets

**SIEMENS**

### SST-110 (TWIN) ⇒ example

Power generation  
from biomass  
(Miscanthus) in  
Great Britain

SST-110  
(TWIN-CA 36)



Operating data:

Live steam pressure:	41,0 bar a
Live steam temperature:	450°C
Condensing pressure:	0,1 bar a
Electrical output:	2 650 kWe

